



# A.D.A.

*ultimate luxury*

# HOMES

www.adahomes.com.au

## The Calisto 2

AREAS:-	
Block (Lot 9533) Area:	610 m <sup>2</sup>
Living:	187.40 m <sup>2</sup>
Verandah:	18.80 m <sup>2</sup>
Garage:	40.37 m <sup>2</sup>
<b>Total:</b>	<b>246.60 m<sup>2</sup></b>



**5 HAYDON ST, ROSEBERY PARK (LOT 9533)**



**Licensed Residential Builder**

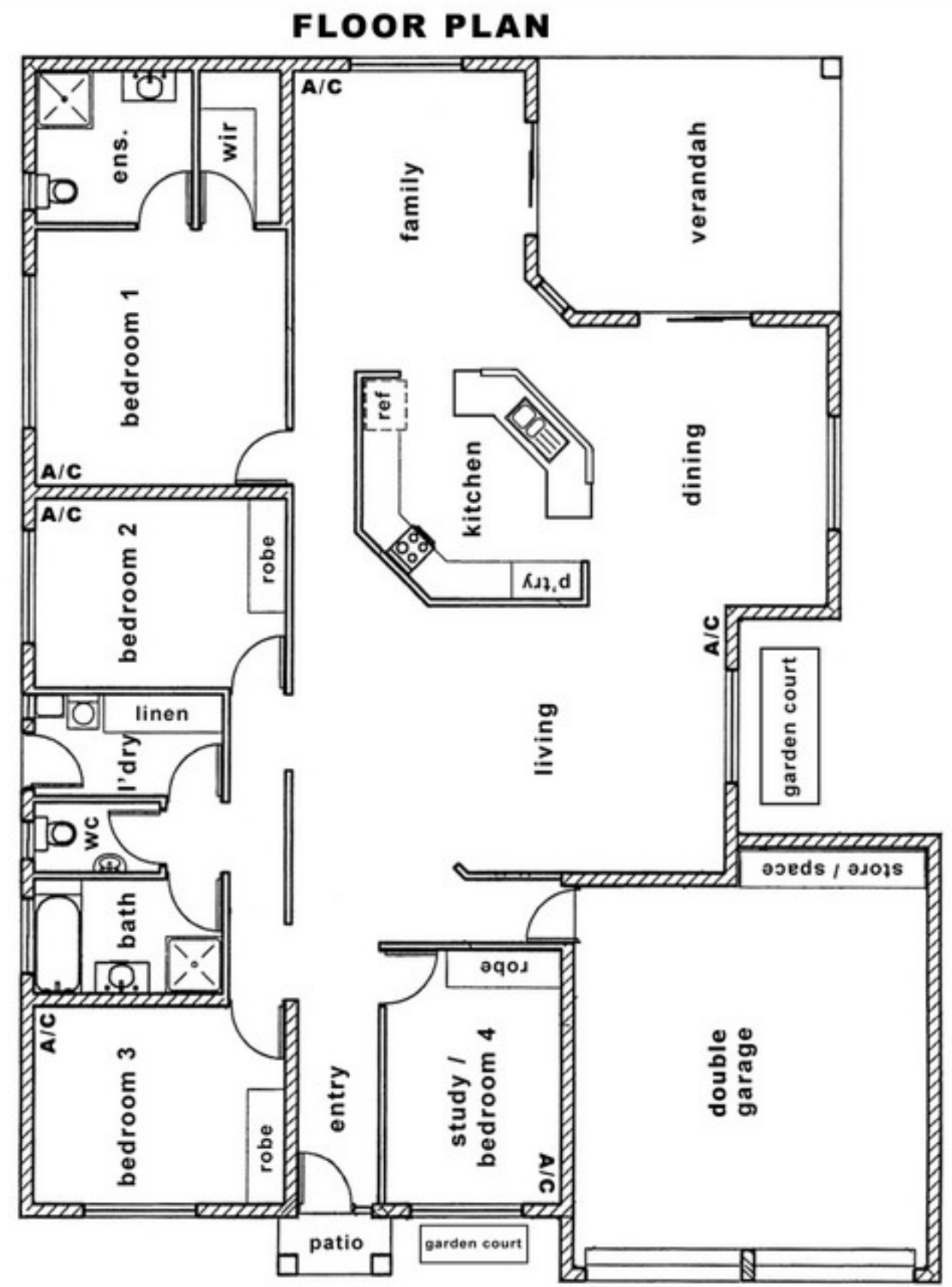
### The Calisto 2 - Exceptional Family Home!

Modern 4 bedroom home featuring ensuite and wall-in-robe to master bedroom.

Tiled and air-conditioned throughout, great designer kitchen double lock up garage.

Large verandah and two garden courts.

Perfectly positioned near parks.



**Mobile: 0414 271 147, 0402 042 495, 0412 453 640**

Tel/Fax: (08) 8947 1917 | E-mail: info@adahomes.com.au | PO BOX 3655 DARWIN NT 0801  
Unit 1, 32 Muramats Rd, Hudson Creek Industrial Estate